

Konzert Nr. 3 Es dur

für Horn und Orchester

WOLFGANG AMADEUS MOZART
(1756-1791)

Horn in F

allegro

4 Tutti 18

28 Solo A

34 3

43 *tr*

49 B 3 *con espressione*

57 *cresc. - - - - - f*

63 *p* *cresc. - - - - - f* C *tr*

70 15 D *mf*

90 2

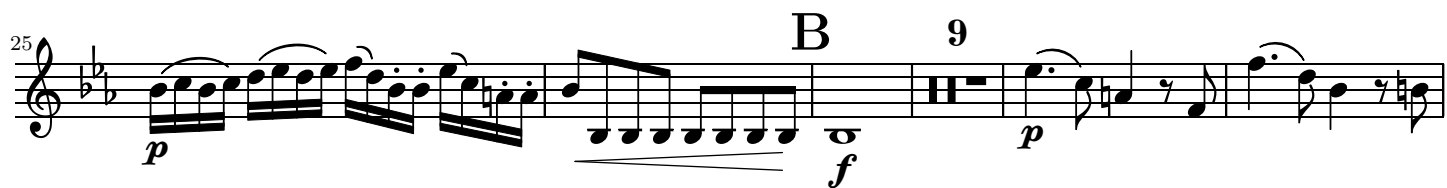
100

public domain



romanze





51 **B** 3

61

68 **C** *f*

75 *p*

82 12 **D**

101 3 3

114 3

124 **E** 9

139

146 **F** *cresc.* - - - - *f*

154 *p*

160 **7 G4**

mf

178 **H**

cresc. - - - - -

186 **5**

f *p*

198 **5**

cresc. - - - - - *f*

Detailed description: The musical score is written on a single staff in G major (one sharp). It consists of four lines of music, each starting with a measure number. Line 1 (measures 160-177) begins with a treble clef and a key signature of one sharp. It features a series of eighth and quarter notes, followed by a whole rest, and then continues with eighth notes. A dynamic marking of *mf* is placed below the staff. Line 2 (measures 178-185) starts with a half note, followed by eighth notes, and ends with a half note. A dynamic marking of *cresc.* is placed below the staff, followed by a dashed line. Line 3 (measures 186-197) begins with a half note, followed by eighth notes, and ends with a half note. A dynamic marking of *f* is placed below the staff. A trill is marked above a note in measure 190. A dynamic marking of *p* is placed below the staff. Line 4 (measures 198-205) starts with a half note, followed by eighth notes, and ends with a half note. A dynamic marking of *cresc.* is placed below the staff, followed by a dashed line. A dynamic marking of *f* is placed below the staff. Fingering numbers '5' are placed above notes in measures 186 and 198.